

# PEPS PROGRAM EVALUATION AND COMMUNITY ASSESSMENT

Parents, group leaders, staff, and professionals from community-based organizations met in 2019 in independent focus groups and interviews to share in-depth feedback about PEPS (peps.org) and parent support in their communities.

All parents need **social support**

All parents need **quality affordable childcare**

Low income parents need **affordable housing**

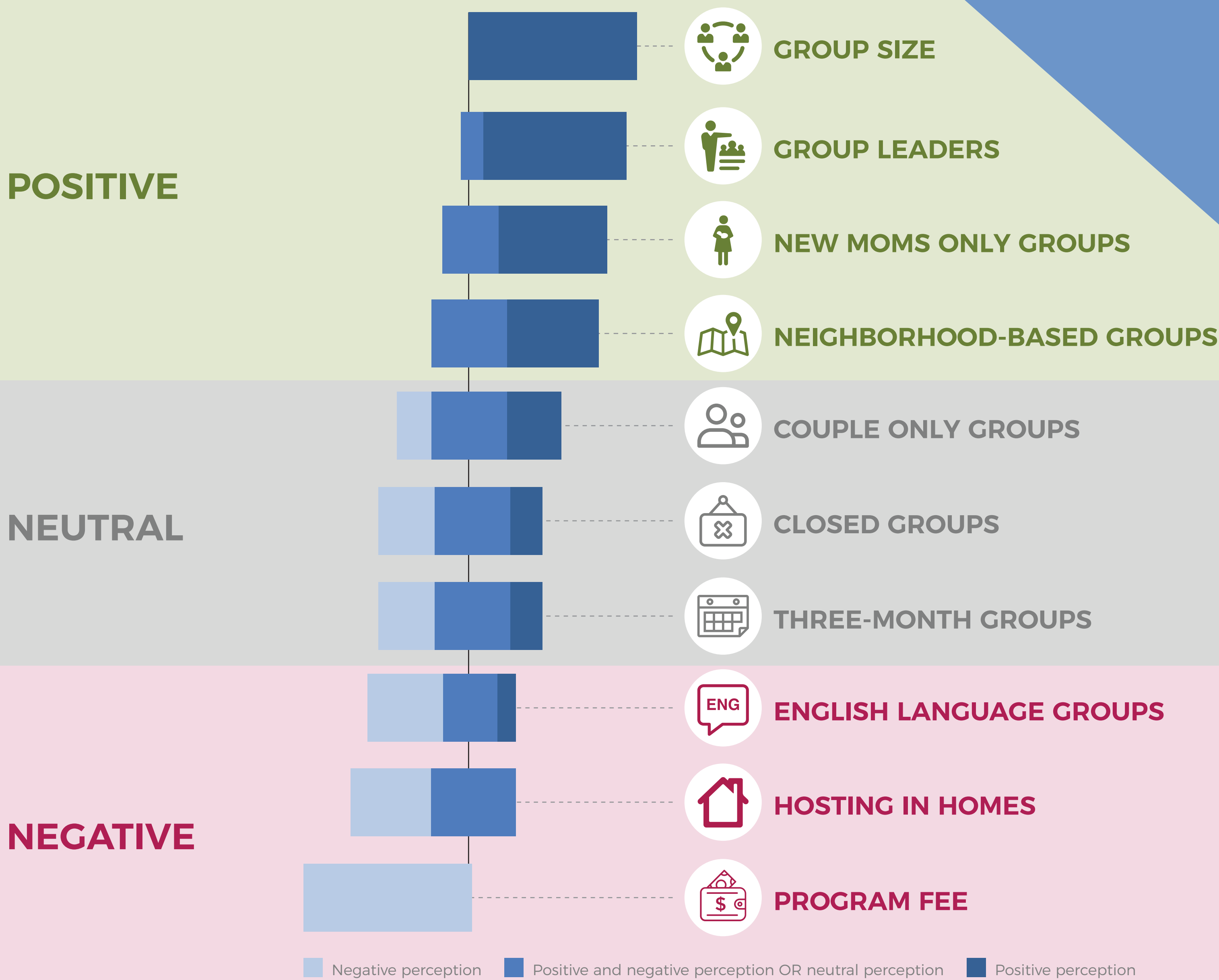
Low income parents need **access to basic needs**

Immigrant and refugee parents need **translation and language support**

Teen moms need to feel **less judged by community members and access to transitional housing**



## COMMUNITY PERCEPTIONS OF PEPS MODEL



*"I didn't know there was other mothers in this school and now I can talk to these mothers and know that they have babies and if I need advice, I can just come up to them like, Hey, help me out. Do you have some advice?"*  
 —Cocoon House Focus Group Participant

*"I was a first time mother, and because you're in a different country and you don't know how the systems work. It helps me get out of the house and it is good for me and my daughter to socialize with others."*  
 —Open Arms Focus Group Participant

*"I didn't know where to go when I was pregnant, but coming to PEPS, they'd pass their babies around, hold them, and they taught me some ways to parent [my daughter] and read her books and stuff like that."*  
 —Cocoon House Focus Group Participant

## PILOT GROUP\* PARTICIPANT FEEDBACK

\*Partnerships with Open Arms serving spanish-speaking moms and with Cocoon House, Crossroads High School, and Compass Health serving teen moms



## NEXT STEPS FOR PEPS

